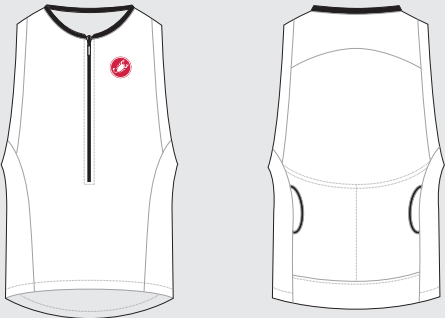
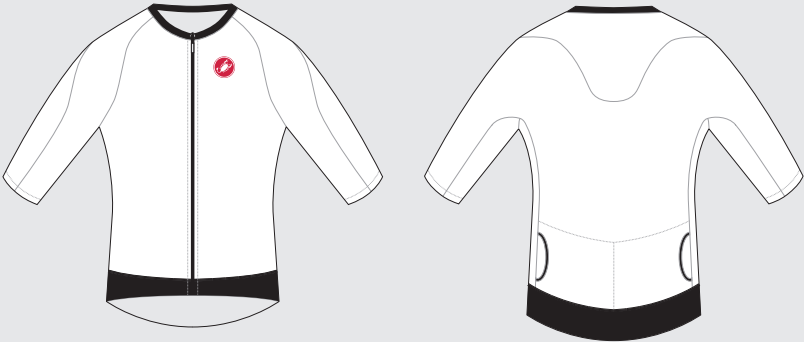




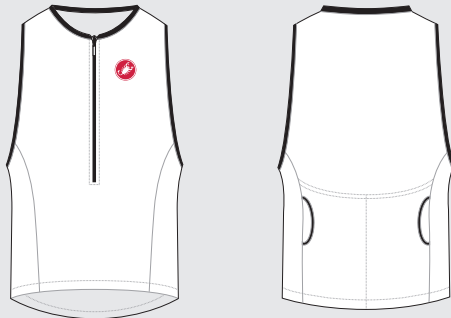
FREE TRI TOP



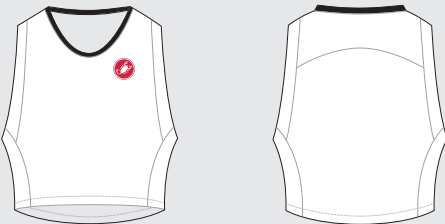
T1: STEALTH TOP



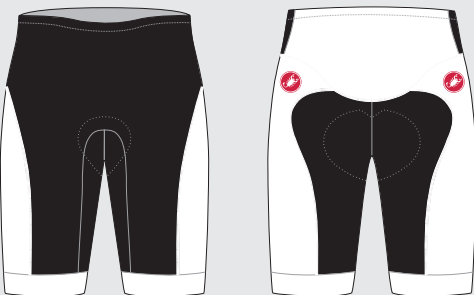
CORE TRI TOP



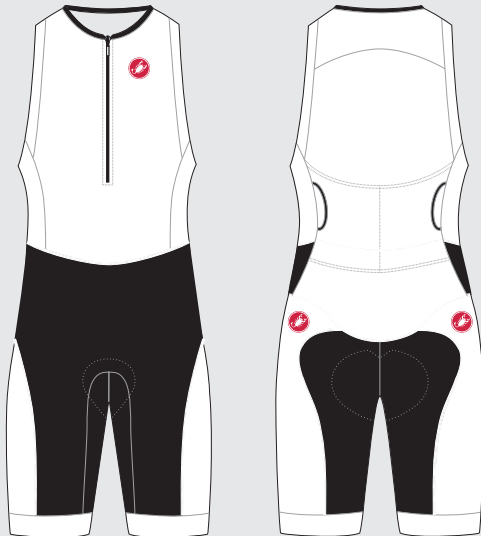
FREE TRI SINGLET



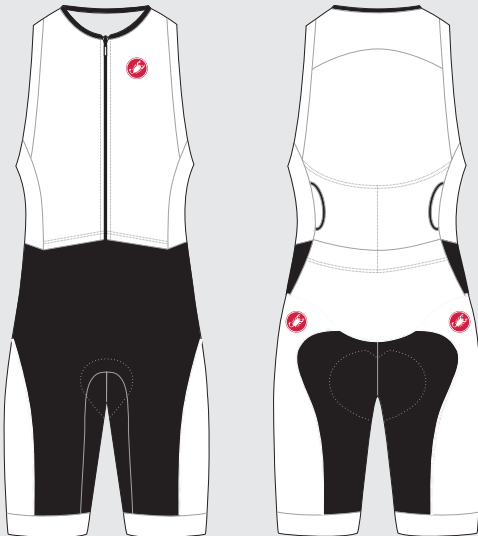
FREE TRI SHORT



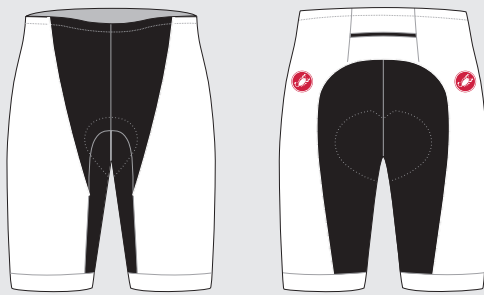
FREE TRI SUIT



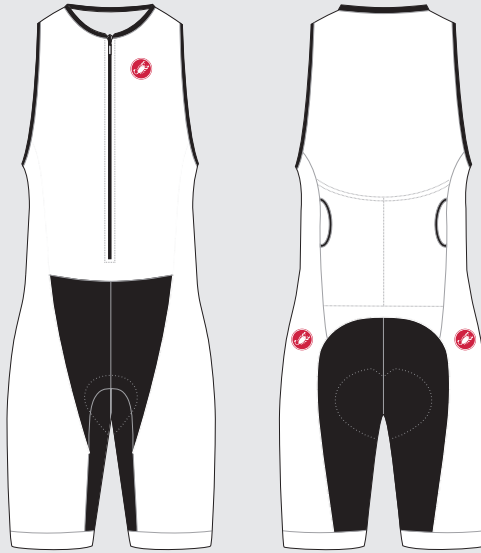
FREE TRI SAN REMO SUIT



CORE TRI SHORT



CORE TRI SUIT



**CASTELLI**  
*Servizio Corse*

**POLICIES AND PROCEDURES**

PRODUCTION STARTS ONLY AFTER ORDER, DEPOSIT, AND ART IS APPROVED.

ART PLACEMENT IS CONSIDERED TO BE APPROXIMATE IN POSITION AND SCALE. CASTELLI MAKES EVERY ATTEMPT TO MATCH THE LINE ART AS CLOSELY AS POSSIBLE TO THE FINISHED PRODUCT. DESIGN ELEMENTS THAT CROSS SEAM LINES CANNOT BE GUARANTEED TO LINE UP ON THE FINISHED PRODUCT.

CUSTOMER AFFIRMS THEY HAVE PERMISSION TO USE ALL LOGOS CONTAINED IN THE PROVIDED ART FILES.

**DYED LYCRA STANDARD COLORS**



FRONT AND GUSSET PANELS OF THE SHORT AND TRI SUIT ARE ONLY AVAILABLE IN THE COLORS INDICATED ABOVE

**CASTELLI  
COLORS**

		BLACK BLACK C	ANTH. 432 C	NAVY 289 C	ROYAL 7687 C	RED 186 C	YELLOW 11 C	33 2767 C	34 273 C	35 2747 C	36 7456 C	37 2935 C	38 659 C	39 292 C	40 290 C
1	7610 C	2	7622 C	3	200 C	4	185 C	5	1935 C	6	705 C	7	169 C	8	698 C
9	7553 C	10	1035 C	11	1655 C	12	1505 C	13	145 C	14	144 C	15	143 C	16	0131 C
17	390 C	18	371 C	19	392 C	20	3975 C	21	375 C	22	387 C	23	381 C	24	386 C
25	3425 C	26	7727 C	27	364 C	28	362 C	29	7545 C	30	7708 C	31	633 C	32	7444 C
33	2767 C	34	273 C	35	2747 C	36	7456 C	37	2935 C	38	659 C	39	292 C	40	290 C
41	2627 C	42	2655 C	43	650 C	44	1625 C	45	7424 C	46	1915 C	47	211 C	48	217 C
49	7764 C	50	7497 C	51	466 C	52	BLACK C	53	COOL GRAY 11 C	54	COOL GRAY 9 C	55	COOL GRAY 7 C	56	COOL GRAY 4 C
57	7764 C	58	306 C	59	929 C	60	7488 C	61	7622 C	62	216 C	63	170 C	64	7562 C
65	7522 C	66	WARM RED C	67	485 C	68	695 C	69	667 C	70	7698 C	71	2234 C	72	577 C